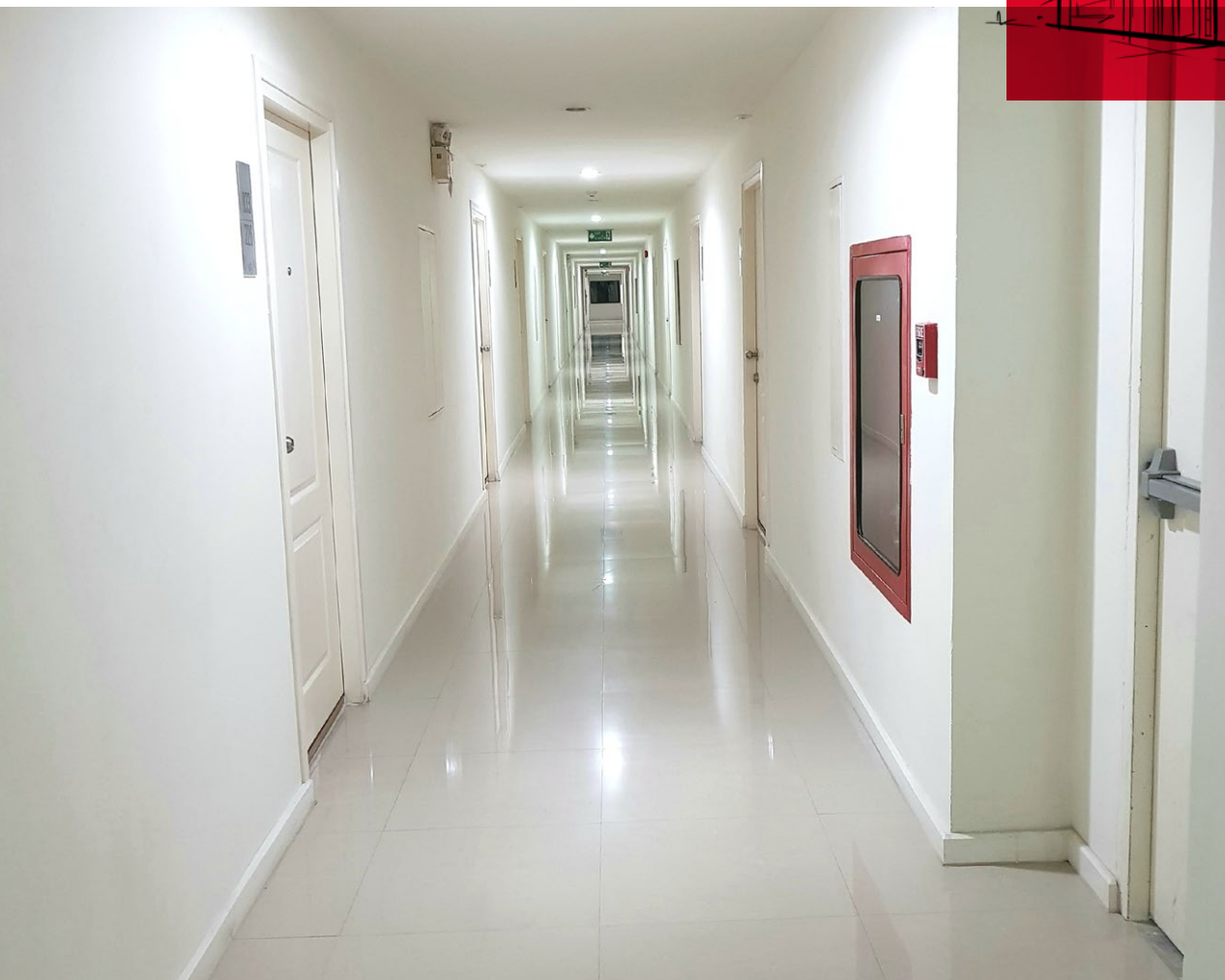


FIREPRO[®] **INTUMESCENT** **EXPANSION** **JOINT SEAL**

Firestop solution for linear joints in walls and floors



FIREPRO® INTUMESCENT EXPANSION JOINT SEAL

Intumescent Expansion Joint Seal provides an easy retro-fit solution to firestop existing construction joints up to 75mm thick in floors and walls.

Friction fitted under compression, Intumescent Expansion Joint Seal is designed to prevent the passage of fire in a range of joint, cavity and interface applications including blockwork and curtain walling.





Advantages

- Up to 4 hours fire resistance
- Easy to install compression fit
- Dry fix solution
- Water resistant

Description

Intumescent Expansion Joint Seal is a compressible strip formed by shrink wrapping a graphite based intumescent polymer to both faces of a ROCKWOOL core.

Intumescent Expansion Joint Seal is supplied in one metre lengths to suit the joint to be filled. The width of the product is dependent on the fire rating required (see Table 1).

Applications

FIREPRO Intumescent Expansion Joint Seal is installed by simply compressing by hand and then pushing into the joint. Adjacent pieces of the product are tightly butted together. There is no need to use any adhesives or intumescent sealant in conjunction with the product.

In a fire, the graphite based intumescent material swells to form a hard char, which prevents the passage of fire and smoke through the joint.

Intumescent Expansion Joint is suitable for use in:

- Blockwork cavities
- Curtain wall/Concrete slab interfaces
- Expansion joints
- Structural joints

Performance

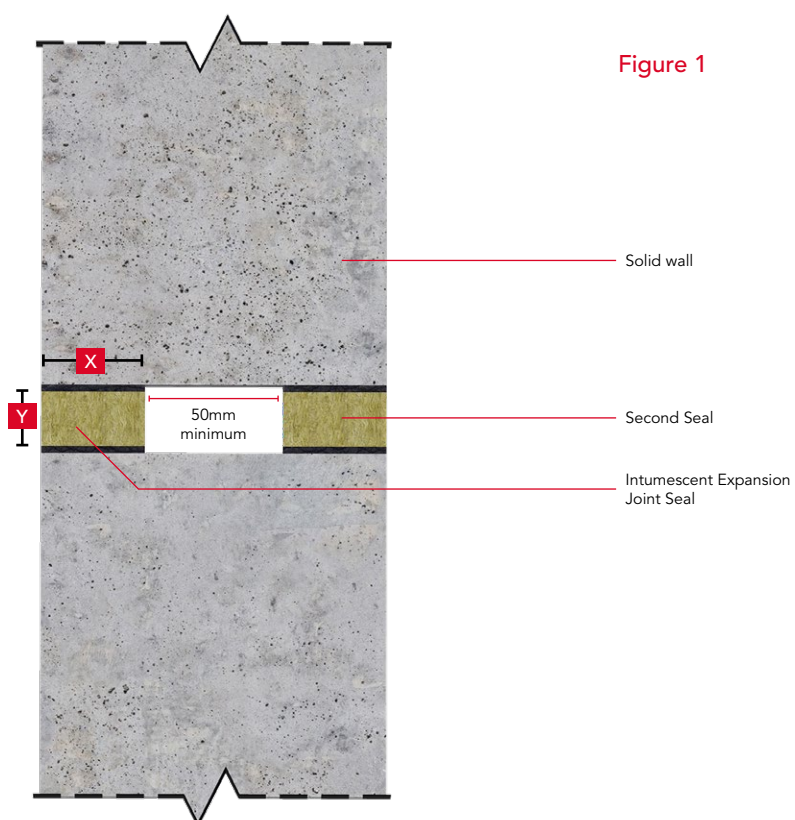
Fire performance

ROCKWOOL Intumescent Expansion Joints to provide up to 4 hours rating for linear joints in walls & floors.

Table 1
Fire resistance
performance

Seal depth 'X' (mm) [Thickness of seal in brackets]	Gap width 'Y' (mm)			
	10-14	15-30	31-50	51-75
	Integrity rating (minutes)			
25 [x16] single	120	NA	NA	NA
50 [x16] single	240	NA	NA	NA
25 [x32] double	NA	120	NA	NA
50 [x32] double	NA	240	NA	NA
50 [x52] double	NA	NA	240	NA
50 [x78] double	NA	NA	NA	240

Important note: The thickness of the seal (in brackets) is designed to ensure compression when installing the seal into the gap.



Technical information

Standards and approvals

FIREPRO Intumescent Expansion Joint Seal has been tested to BS 476: Part 20: 1987 and can provide up to 4 hours fire protection in joints.

FIREPRO Intumescent Expansion Joint Seal is third party accredited through IFC and Certifire.

Product information

Property	Description
Length	1000mm
Width	15-78mm
Thickness	25mm, 50mm
Fire Resistance	Up to 4 hours

Installation

Installation in floors

Intumescent Expansion Joint is used to prevent fire penetration through movement joints and gaps in walls and concrete floors (Figure 2) for a specified period up to 4 hours. They are manufactured oversize to fit under compression.

1. Remove all loose debris and loose debris from within the gap
2. Ensure correct width is installed to suit the required Fire Rating
3. Where the gap varies in the length to be sealed, ensure that the correct thickness is installed under compression
4. Do NOT remove sleeving
5. Keep material dry and protect from impact damage
6. Compress and insert the strip into the gap ensuring tight butt joints

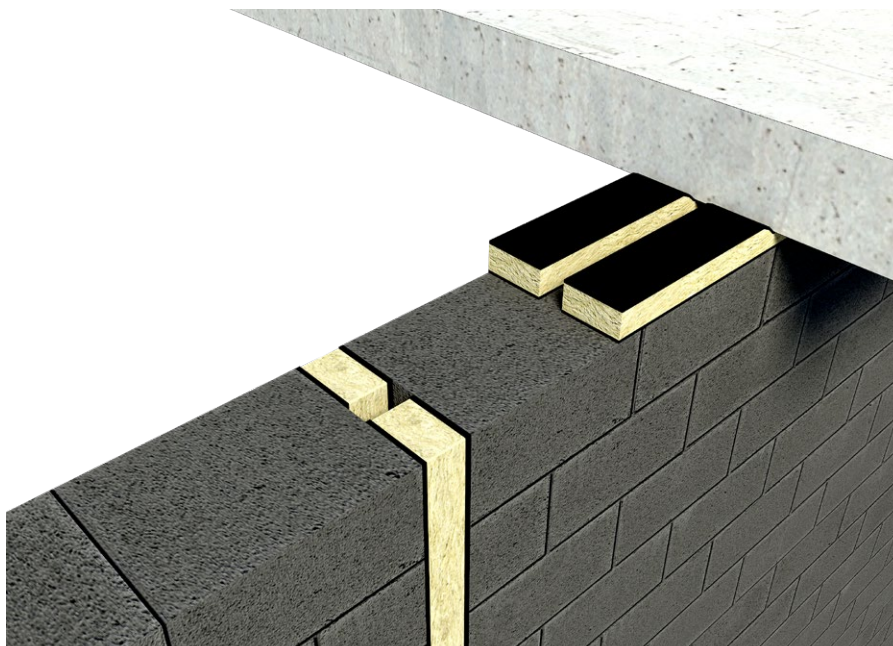


Figure 2

Specification clauses

FIREPRO Intumescent Expansion Joint Seal is associated with the following NBS clauses:

E40 Designed joints in in-situ concrete

- 545 Compressible sealing strip system

F30 Accessories/sundry items for brick/block/stone walling

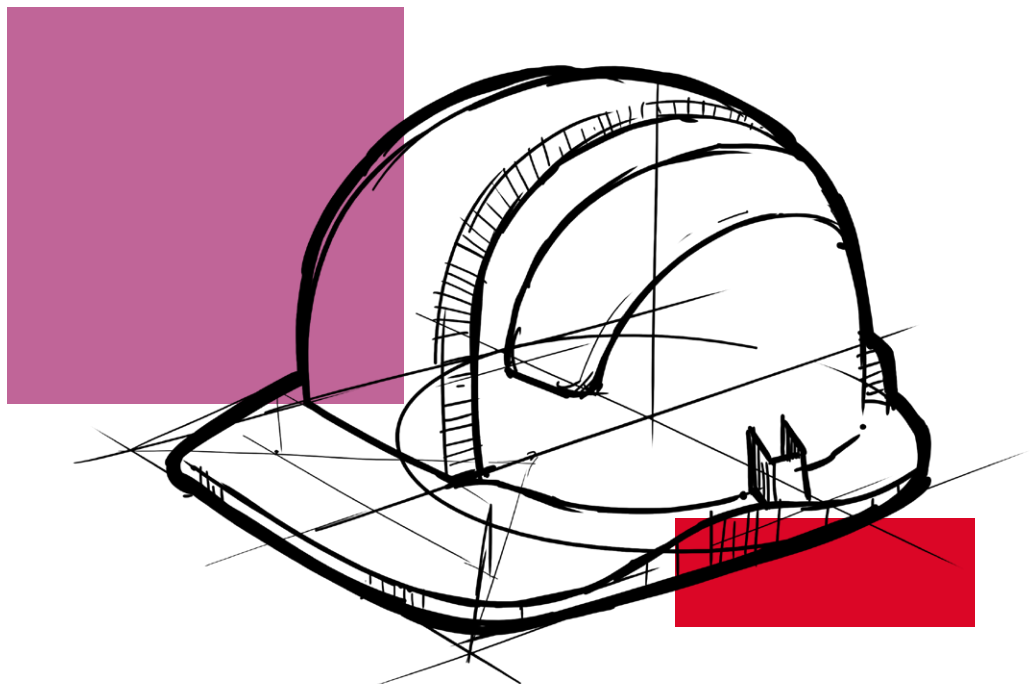
- 616 Fire resistant movement joints without sealant
- 670 Tops of non-loadbearing walls

Disclaimers

This product should only be utilised for applications as outlined in the relevant ROCKWOOL product datasheet and in accordance with the relevant ROCKWOOL Fire Resistance Testing. Additionally, the product must be installed in accordance with the current ROCKWOOL guidelines. For further information please visit www.rockwool.co.uk or contact our Technical Solutions Team on 01656 868490.

Supporting Information

For further information relating to any aspect of the FirePro range, please refer to the applicable ROCKWOOL standard details at www.rockwool.co.uk or contact the ROCKWOOL technical solution team on 01656 868490 or technical.solutions@rockwool.co.uk.



Sustainability

As an environmentally conscious company, ROCKWOOL promotes the sustainable production and use of insulation and is committed to a continuous process of environmental improvement.

All ROCKWOOL products provide outstanding thermal protection as well as four added benefits:



Fire resistance



Acoustic comfort



Sustainable materials



Durability

Health & Safety

The safety of ROCKWOOL stone wool is confirmed by current UK and Republic of Ireland health & safety regulations and EU directive 97/69/EC: ROCKWOOL fibres are not classified as a possible human carcinogen.

A Material Safety Data Sheet is available and can be downloaded from www.rockwool.co.uk to assist in the preparation of risk assessments, as required by the Control of Substances Hazardous to Health Regulations (COSHH).

Environment

Made from a renewable and plentiful naturally occurring resource, ROCKWOOL insulation saves fuel costs and energy in use and relies on trapped air for its thermal properties.

ROCKWOOL insulation does not contain (and has never contained) gases that have ozone depletion potential (ODP) or global warming potential (GWP).

ROCKWOOL is approximately 97% recyclable. For waste ROCKWOOL material that may be generated during installation or at end of life, we are happy to discuss the individual requirements of contractors and users considering returning these materials to our factory for recycling.



Interested?

For further information, contact the Technical Solutions Team on 01656 868490 or email technical.solutions@rockwool.co.uk
Visit www.rockwool.co.uk to view our complete range of products and services.

Copyright ROCKWOOL September 2018.

The ROCKWOOL Trademark

ROCKWOOL® - our trademark

The ROCKWOOL trademark was initially registered in Denmark as a logo mark back in 1936. In 1937, it was accompanied with a word mark registration; a registration which is now extended to more than 60 countries around the world.

The ROCKWOOL trademark is one of the largest assets in the ROCKWOOL Group, and thus well protected and defended by us throughout the world.

If you require permission to use the ROCKWOOL logo for your business, advertising or promotion. You must apply for a Trade Mark Usage Agreement. To apply, write to:
marketcom@rockwool.com.

Trademarks

The following are registered trademarks of the ROCKWOOL Group:

ROCKWOOL®

ROCKCLOSE®

RAINSSCREEN DUO SLAB®

HARDROCK®

ROCKFLOOR®

FLEXI®

BEAMCLAD®

FIREPRO®

Disclaimer

ROCKWOOL Limited reserves the right to alter or amend the specification of products without notice as our policy is one of constant improvement. The information contained in this brochure is believed to be correct at the date of publication. Whilst ROCKWOOL will endeavour to keep its publications up to date, readers will appreciate that between publications there may be pertinent changes in the law, or other developments affecting the accuracy of the information contained in this brochure. The applications referred to within the brochure do not necessarily represent an exhaustive list of applications. ROCKWOOL Limited does not accept responsibility for the consequences of using ROCKWOOL in applications different from those described within this brochure. Expert advice should be sought where such different applications are contemplated, or where the extent of any listed application is in doubt.

© ROCKWOOL 2018. All rights reserved.

Photography and Illustrations

The product illustrations are the property of ROCKWOOL Ltd and have been created for indicative purposes only.

Unless indicated below, the photography and illustrations used in this guide are the property of ROCKWOOL Limited. We reserve all rights to the usage of these images.

If you require permission to use ROCKWOOL images, you must apply for a Usage Agreement. To apply, write to:
marketcom@rockwool.com.

Notes

Notes

Notes

September 2018

ROCKWOOL Limited

Pencoed
Bridgend
CF35 6NY

Tel: 01656 862 621

info@rockwool.co.uk

rockwool.co.uk

